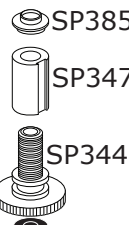
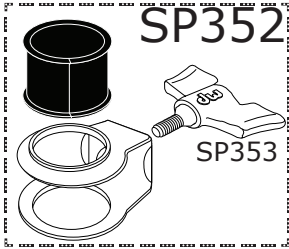
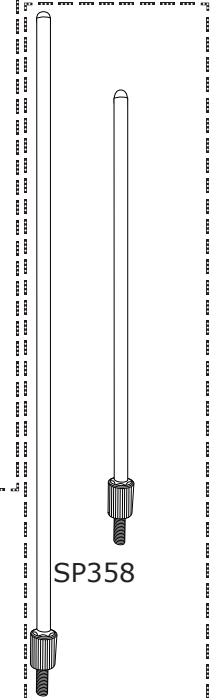
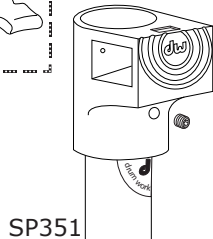
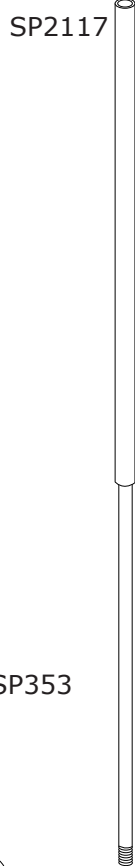
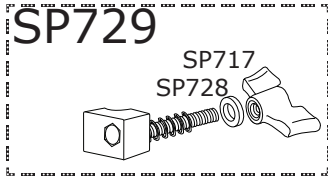
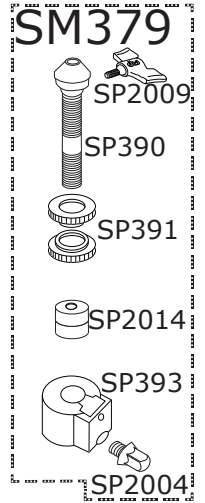
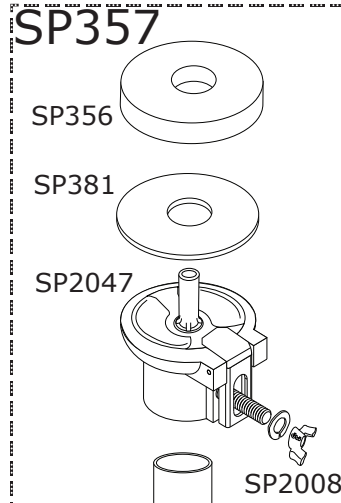
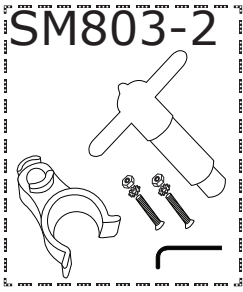
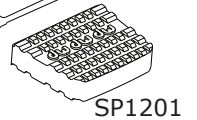
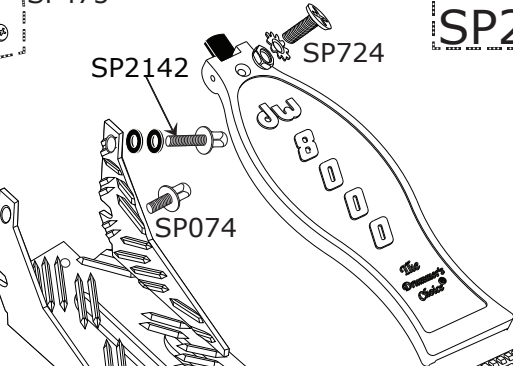
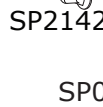
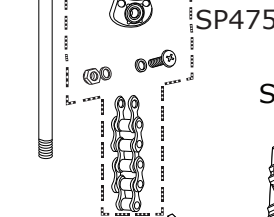
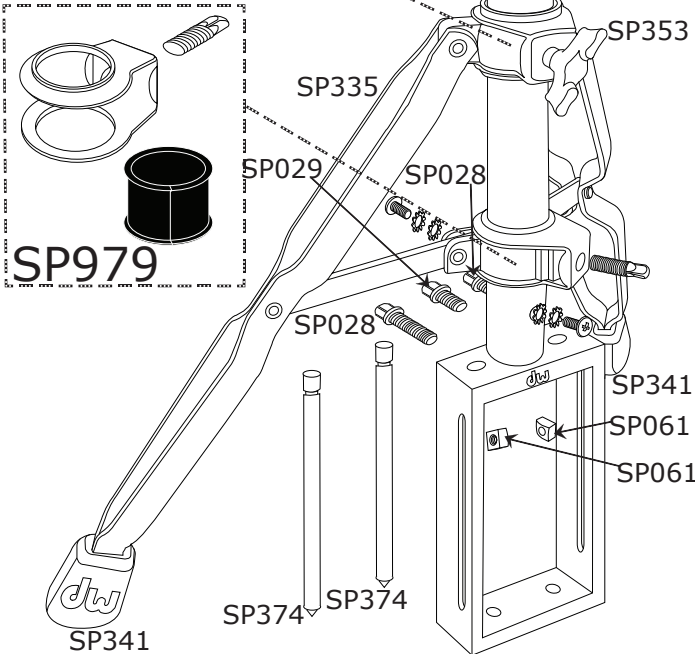


8500T DW Hi-Hat Stand



028



8500T DW Hi-Hat Stand

| Part Number | Description |
|-------------|--|
| DWSP028 | 1/4-20 X 9/16" DRUM KEY SCREW (4 PACK) |
| DWSM029 | 3/8" DRUM KEY SCREW (4 PACK) |
| DWSP061 | SQUARE NUT |
| DWSP074 | DRUM KEY SCREW WITH COLLAR |
| DWSP335 | LEG ASSEMBLY WITH CLAMPS |
| DWSP341 | RUBBER FOOT |
| DWSP344 | HI HAT ADJUSTMENT NUT |
| DWSP347 | THREADED BUSHING |
| DWSP351 | BOTTOM TUBE WITH RECEIVER CASTING |
| DWSP352 | CLAMP |
| DWSP353 | 8MM DW WING SCREW |
| DWSP356 | FELT WASHER (HI HAT SEAT) |
| DWSP357 | UPPER TUBE ASSEMBLY |
| DWSP358 | 21" LENGTH UPPER ROD WITH NUT |
| DWSP362 | 6 INCH HH SPRING |
| DWSP364 | PLASTIC BUSHING |
| DWSP374 | HI HAT SPUR |
| DWSM379 | STANDARD HI HAT CLUTCH |
| DWSP381 | METAL WASHER |
| DWSP385 | PLASTIC STEP WASHER FOR DWSP362 SPRING |
| DWSP390 | CLUTCH BODY |
| DWSP391 | CLUTCH NUT |
| DWSP393 | LARGE CLUTCH NUT |
| DWSP475 | BALL BEARING LINK CONNECTOR WITH CHAIN |
| DWSP701 | BACK HEEL SCREW (3 PACK) |
| DWSP711 | SET SCREW |
| DWSP717 | 6MM WING NUT |
| DWSP724 | SCREW, NUT AND WASHERS FOR CHAIN |
| DWSP728 | WASHER |
| DWSP729 | CLAMP SCREW |
| DWSM803-2 | STEEL DRUMKEY AND KEY AND CLIP HOLDER |
| DWSP979 | CLAMP WITH DRUM KEY SCREW |
| DWSP1201 | HEEL CASTING |
| DWSP2004 | 6MM CLUTCH DRUM KEY SCREW |
| DWSP2008 | WING NUT FOR CYMBAL SEAT (4 PACK) |
| DWSP2009 | 6MM WING SCREW (4 PACK) |
| DWSP2014 | FELT WASHER (4 PACK) |
| DWSP2019 | 1" MEMORY LOCK |
| DWSP2086 | BLACK HINGE FOR 8000 PDL AND HH |
| DWSP2047 | SEAT ASSEMBLY W/O FELT AND WASHER |
| DWSP2093 | HI-HAT ROD SET, 21" & 15" W/ CLUTCH |
| DWSP2117 | LOWER SPRING ROD |
| DWSP2142 | KEY SCREW FOR 8500 PEDAL PLATE |

